

(2) TOHATSU JIS Standard: 70 Diameter Use Resin Guide 70

RG series RG

Characteristics

1. Materials & working temperature range

Type	Material	Temperature range for use
Resin guide retainer	Please refer to (2) Dimensions Table (Table 1)	110 or less
Attachment bolts		110

2. Thermal properties

Melting point	Softening temperature	Flash temperature	Ignition temperature
165	162	350	450

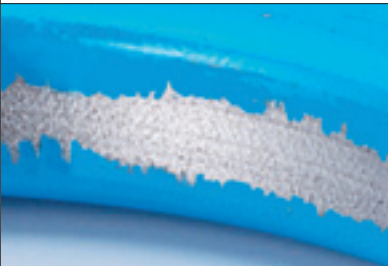
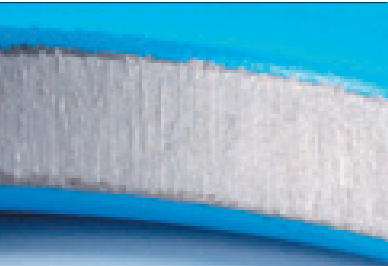


3. Evaluation

Comparative tests of the resin guide and metal guide produced the following results.

Test conditions(Incline load test)

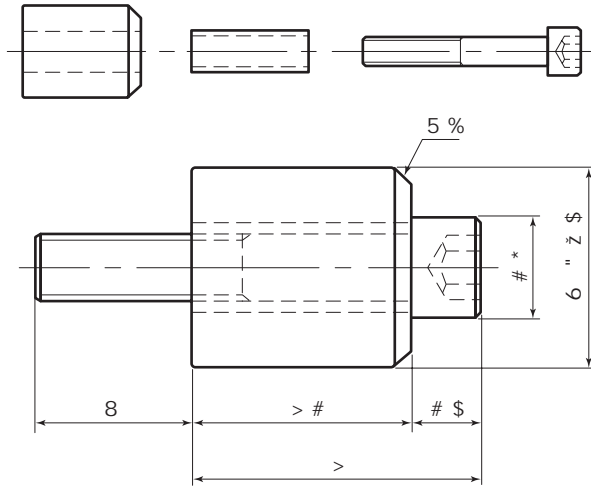
Standard	TM 70 × 250	Guide method	Single
Test speed	70spm	Guide dimensions	L = 100mm
Incline angle	Twice 2	Stroke	80mm

Test results

	Resin guide	Steel Guide
Time of use	256 hour	125 hour
Use results	Undamaged	Damaged
Cutting powder	Minute quantities	Large amount of metal powder
TM 70 × 250 Abrasion TM 70 × 250		
Abrasion of Guide		

Resin guides are softer than spring steel, and have a lubricated quality, so they are less likely to produce harmful scratches on the spring inner area which result in damage. Resin guides do not damage springs, so they are able to retain shot peening effect parts, and dramatically reduced durability is uncommon.

Table of standards



# #	@ a žB S d fS fW	? S f Wd bS e
	D WlbY nbVdWWf S b` Wd	B a erS U Wf S ε B A ?
	8 bj W Vob W	E E& " "
	4 a efnlWV	E 5 ? & %'

7 j S fb eW a	ln	r	D 9 \$ % Ž " ' " # " "
---------------	----	---	------------------------

FS T eW a X If S ` V S d V I

? a V We	6	>	> #	F aW lbsW a X S b b	ebU S T eW bTeL eS T eW If S ` V S d V
\$ % Ž	" ' "	' " ž	% ž "	# \$J (' J B / # ž)'	\$) ž " F > ' " F ? ' " F : ' " F 4 ' "
\$ % Ž	")' \$ % ")' ž "	(% " "	# \$J + " B / # ž)'	
\$ % Ž	# " % "	# " " ž "	** ž "	# \$J # # ' B J # ž)'	
\$ % Ž	# \$ '	# \$ ' ž "	# # % ž "	# \$J # & " B J # ž)'	
\$ (ž	" ' "	' " ž	% ž "	# \$J (' J B / # ž)'	\$) ž " F 8 ' "
\$ (ž	")' \$ % ")' ž "	(% " "	# \$J + " B / # ž)'	
\$ (ž	# " % "	# " " ž "	** ž "	# \$J # # ' B J # ž)'	
\$ (ž	# \$ '	# \$ ' ž "	# # % ž "	# \$J # & " B J # ž)'	
\$ * ž	" ' "	' " ž	% ž "	# \$J (' J B / # ž)'	\$) ž " F > (" F ? (" F : (" F 4 ("
\$ * ž	")' \$ * ")' ž "	(% " "	# \$J + " B J # ž)'	
\$ * ž	# \$ % "	# " " ž "	** ž "	# \$J # # ' B J # ž)'	
\$ * ž	# \$ '	# \$ ' ž "	# # % ž "	# \$J # & " B J # ž)'	
% # ž	" ' "	' " ž	% ž "	# \$J (' J B / # ž)'	\$) ž " F 8 ("
% # ž	")' \$ % ")' ž "	(% " "	# \$J + " B / # ž)'	
% # ž	# " % "	# " " ž "	** ž "	# \$J # # ' B J # ž)'	
% # ž	# \$ '	# \$ ' ž "	# # % ž "	# \$J # & " B J # ž)'	
% (ž	" ' "	' " ž	% ž "	# \$J (' J B / # ž)'	\$) ž " F 8)" F >)" F ?)" F :)" F 4)"
% (ž	")' \$ % ")' ž "	(% " "	# \$J + " B / # ž)'	
% (ž	# " % "	# " " ž "	** ž "	# \$J # # ' B J # ž)'	
% (ž	# \$ '	# \$ ' ž "	# # % ž "	# \$J # & " B J # ž)'	